

## Screw-Type Volumetric Color Feeder for Extrusion

*Accurately meters color concentrate and regrind materials*

Comet's AC/IC-1100 screw-type volumetric color feeder is designed for metering free-flowing granulated additives (color concentrate and regrind materials) directly to your extrusion machine. An AC motor is control mounted and can be connected to the tachometer of the extruder so a synchronous operation between the extruder and metering unit can be obtained.

The AC/IC-1100 consists of three main parts; transition piece with a quick disconnect adapter plate, metering house with material hopper, and metering screw sleeve with electrical control box.

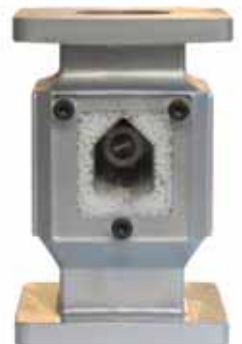
### Standard Features

- Contamination free stainless steel 10 liter material hopper.
- Standard transition piece mounts two or four AC/IC-1100s.
- 9mm (3/8") metering screw with spring-loaded steel ball.
- 16mm (5/8") stainless steel metering sleeve.
- Transition piece with quick disconnect adapter plate.
- Separate LED display with digital setting control and potentiometer.
- AC/IC NP2 transition piece with AC/IC A3/Q-(28) quick disconnect adapter plate.
- 1 x 115V grounded electrical voltage (1-10V external tachometer voltage or alternative).
- 10-foot (3m) cable with plug to connect to the metering unit.

### Options

- Level sensor control.

**Extruder  
Synchronous  
Control**



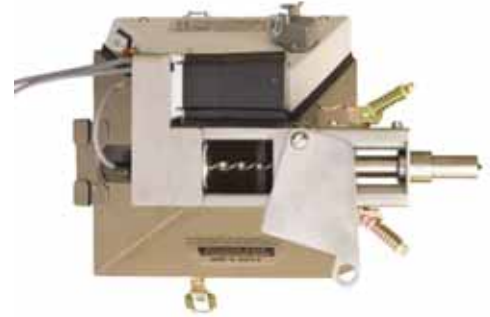
*The transition piece's internal baffle ensures a consistent material blend.*  
**No extra mixer required!**

## Screw & Sleeve



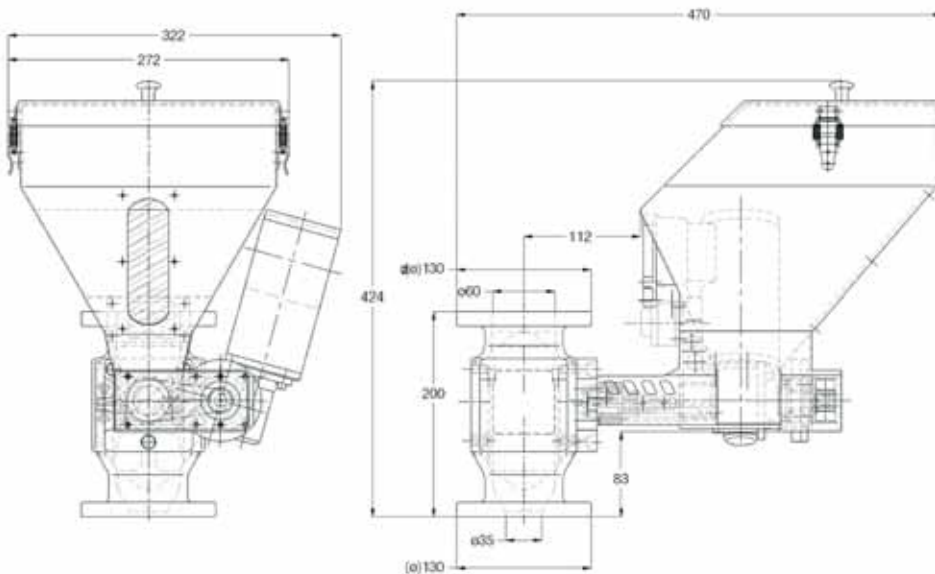
No.	Screw Diameter (mm)	Sleeve Diameter (mm)	Quantity Per Revolution (g)
1	5	6	0.03
2	6	13	0.25
3	9*	16*	1.00
4	12	19	2.20
5	15	22	4.00
6	18	25	5.50

The values shown for color concentrate are approximate. Performance can be lower for regrind material because of the lower density (grams/liter).



**Easy emptying through the bottom outlet.**

## Dimensions



## Specifications

<b>Power Supply</b>	1 - 230 VAC
<b>Metering Screw Revolution Speed (RPM)</b>	1 - 99.9
<b>Metering Capacity (kg/hr)</b>	0 - 33
<b>Unit Construction Material</b>	Aluminum / Stainless Steel / Polycarbonate
<b>Noise Level</b>	70 dBA
<b>Dimensions (mm) (H x W)</b>	425 x 465
<b>Weight (kg)</b>	16.5

