

## Filterless Central Hopper Receivers

*An integral part of any central conveying system for rapid conveying of pellets and regrind.*

Comet's CHR-U and CHR-U-E filterless central hopper receivers are an integral part of any material loading system for trouble-free conveying of plastic pellets and regrind. There are two designs available to control the material level. Both designs have an internal sequencing valve that works with a central vacuum pump and central control to perform reliable, consistent production, and a quick-disconnect vacuum lid ensuring fast, easy cleanup and maintenance (except the CHR-48U and higher).

1. **Vacuum Receiver** (style U): Vacuum hopper loader configuration with a magnetic reed switch and discharge valve.
2. **Photosensor Receiver** (style U-E): Photosensor with a glass hopper that can connect directly to the throat of a processing machine.

### Standard Features

- 100% corrosion-free stainless steel hoppers prevent pellet contamination and increase the loader's lifespan.
- Reed switch on the vacuum hopper guarantees material is supplied on time, without interruption.
- Photosensor switch accurately controls the loading process.
- Internal vacuum sequencing valve inside the loader ensures continuous material loading, prevents material shortages, and enables the loader to be auto-controlled by a centralized system without additional wiring.
- Internal stainless steel mesh filter prevents dust and fines, and other contaminants from being sucked into the vacuum line.
- 6-pin plug connects with Comet's CAL-UG hopper loader and 4-pin plug connects with Comet's CCD honeycomb matrix dryer for safe, reliable performance.
- Extra large discharge throat eliminates material bridging.
- If several central loaders share the same material pipe, an optional non-return valve or pneumatic non-return valve is available.

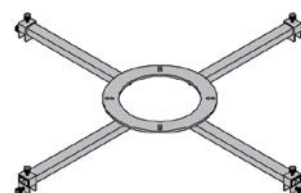


### Optional Accessories

- Air accumulator auto washing device removes contaminants in recycled material (models CHR-12U and above).
- Multifunctional HMB-900 installation frame with 35½" (900mm) adjustable selection range.
- Quick mixing valve provides proportioning/layering of materials (works in conjunction with a proportioning valve).
- Filter for an auto-purging device.



**Air Accumulator Auto Washing Device**



**HMB-900**

## Specifications

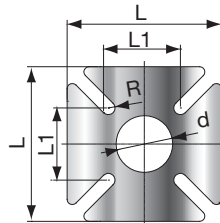
CHR Models	3U	3U-E	6U	6U-E	36U	48U	96U
Hopper Capacity	(~gal)	.8	1.6		9.5	12.7	25.4
	(L)	3	6		36	48	96
Conveying Pipe Dia.	(inch)	1.5	1.5		2	2.5	2.5
Air Suction Pipe Dia.	(inch)	1.5	1.5		2.5	3	3

## Dimensions

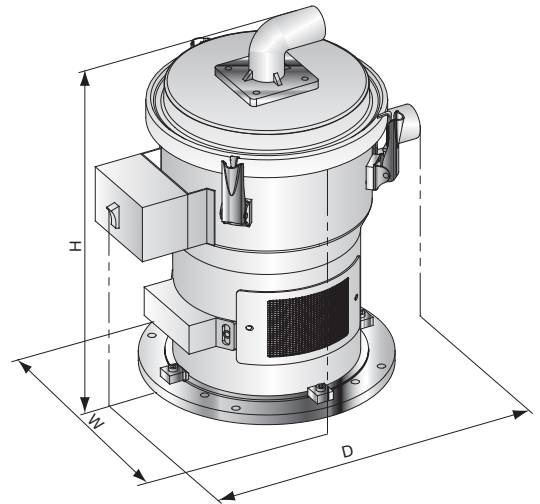
H	(inch)	20.5	21	16.5	23.5	36.5	38	44
	(mm)	380	535	420	600	930	975	1220
W	(inch)	9.8	8	11	10.8	12.5	13.7	17
	(mm)	250	207	285	275	315	350	430
D	(inch)	13	12	14	14	15.7	19	22
	(mm)	330	310	360	360	400	485	560
Weight	(lb)	8.8	13	17.5	24	33	44	
	(kg)	4	6	8	11	15	20	

## CHR-U-E Base Mounting Dimensions

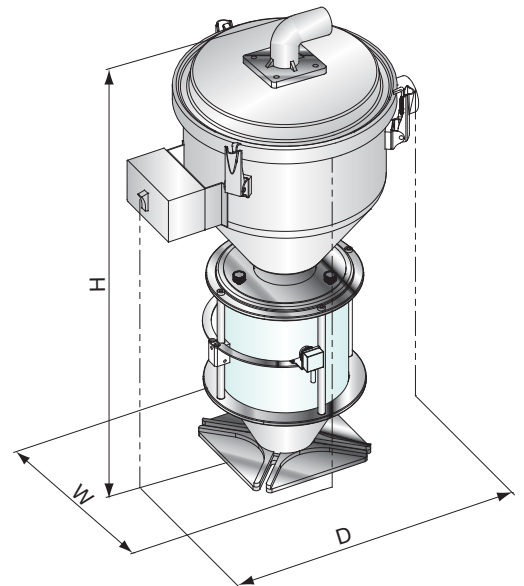
CHR Models	3U-E	6U-E	12U-E	24U-E
L	(inch)	4.7	6	7
	(mm)	120	150	180
L1	(inch)	2	2.7	3
	(mm)	50	70	85
d	(inch)	1.5	2.2	2.2
	(mm)	40	55	55
R	(inch)	.25	.25	.25
	(mm)	6.5	6.5	6.5



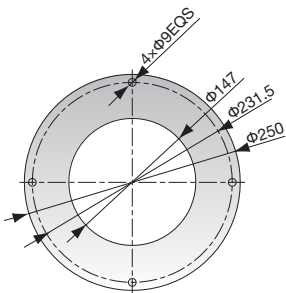
We reserve the right to change specifications without prior notice.



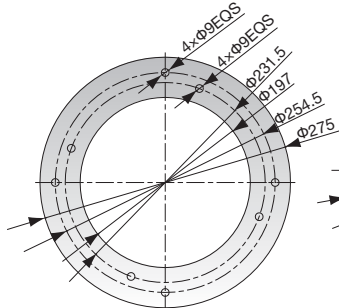
CHR-U



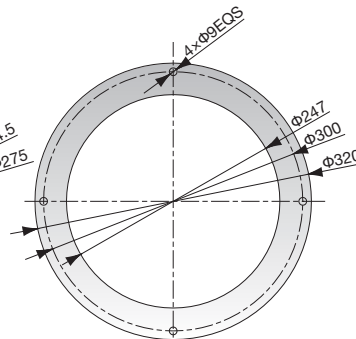
CHR-U-E



CHR-3U  
Base Flange



CHR-6U~36U  
Base Flange



CHR-48U~96U  
Base Flange