

Soundproof Central Granulators

Regrind and recycle plastic products, such as preforms and PET bottles, while minimizing power consumption and noise.

Comet's dependable, heavy-duty CG-23/30/36 series front feed, staggered- or scissor-cut granulators are designed to produce consistent, high quality regrind material with minimal dust and fines. These central granulators also help to minimize noise pollution with a fully enclosed sound-proof design. They are ideal for use beside the press to grind sprues, runners, and rejected parts. Each granulator is operator friendly and safe, ensuring excellent performance and is easily accessible to parts for cleaning and maintenance.

CG-23

The CG-23 series features a staggered blade design and is user friendly and safe, with sound-proof enclosures ensuring excellent performance.



CG-23 Staggered Blade

CG-23 Features:

- D2 hardened cutting knives
- Hardened cutting chamber
- Adjustable angle on inlet chute for easy feeding from conveyor
- Power-assisted, tilt-back hopper
- Cutting blade retainer for quick blade changing
- Fully enclosed design and sound
- Vacuum bin discharge and vacuum blower with cyclone included
- Solid pulley design and sealed bearings
- Tool-free access for maintenance and cleaning
- Emergency E-Stop
- Main power disconnect and motor overload relays

CG-30 & CG-36

The CG-30 and CG-36 series feature an open rotor design. The central scissor cut granulator includes a standard rotor blade design, tilt-back hopper, and a reversible screen. These features not only increase usability, but also help increase the performance of our central open rotor granulators.



CG-30 & CG-36 Scissor Blade



CG-3060

CG-30 & CG-36 Features:

- D2 hardened knives
- Hardened cutting chamber
- Adjustable angle on inlet chute for easy feeding from conveyor
- Power-assisted, tilt-back hopper
- Tangential feed
- Standard rotor blade design
- Blade retainer for quick blade changing without re-adjustment
- Fully enclosed design and sound proofing for low noise operation
- Reversible screen design
- Solid pulley design
- Sealed bearings
- Tool-free access for maintenance and cleaning
- Emergency E-Stop
- Main power disconnect
- Motor overload

Other Features

The CG-23/30/36 series sound-proof granulators are suitable for centralized recycling of waste or rejected parts. The granulators feature a heavy-duty structure, easy operation, and quick blade replacement. The staggered blade design of the CG-23 decentralizes the granulation work load, increases cutting efficiency, and reduces friction and energy consumption. The blade retainer is designed for quick blade replacement without adjustment. The scissor blade design of the CG-30 and CG-36 easily grab and cut through materials. The blade is made of high-quality steel to ensure durability. The increased blade inclination enables a better cutting effect, lower noise, and reduced energy consumption.



Automatic Conveying Device

An automatic conveying device for regrind material increases conveying efficiency. Material are conveyed by blowers, that promote airflow and cutting chamber air cooling, thus, reducing the room temperature of the cutting chamber.

Cutting Chamber Cooling Device (for CG-30 & CG-36 only)



The CG-30 CG-36 granulators are equipped with a water cooling device at the back plate of the cutting chamber. The water cooling device efficiently reduces the temperature of the cutting chamber to avoid material blocking.



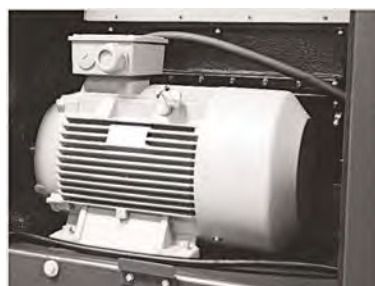
Reducing Cutting Noise

Using an enclosed sound-adsorbing box, the granulator efficiently reduces noise made by the cutting process.



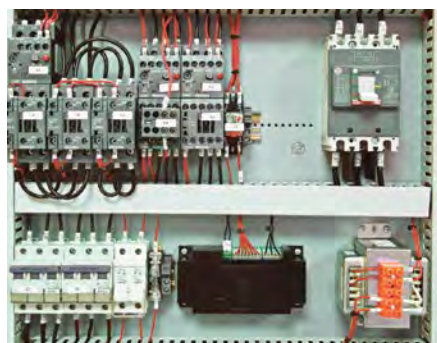
Presetting Knife Jig

Rotating blades can be adjusted in the fixture outside the machine instead of inside using the presetting knife jig. This tool makes blade adjustment much easier.



High Efficiency Cutting Motor

The Siemens high-efficiency motor provides stable performance as well as safe operation. This motor also aids in energy consumption.



Control Safety Protection

The control has multiple protections including motor overload protection, short circuit, phase default and phase order detection. These features ensure safe granulation operation

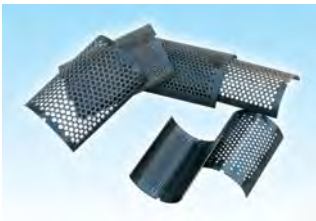
Options

Full Receiver Alarm Device



The full receiver alarm device is used for unmanned operation so materials won't be wasted. Whenever regrind levels reach the motor position, a sensor device forces the machine to stop and warns the user by sounding an alarm.

Special Screens



Special screen mesh sizes:
CG-23 & CG-30 series:
Φ4, Φ6, Φ10, Φ12, (mm)

CG-36 series:
Φ8, Φ12, Φ17, Φ25 (mm)

Feed Hopper for Conveyor



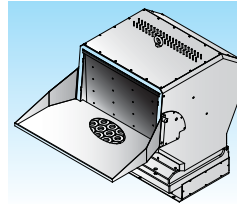
It's difficult to feed material to large granulators. Usually when feeding material, installation must be at a lower level or a platform must be built. Comet's belt conveyor, for the CG-36 series, easily conveys material into the cutting chamber.

Material Side-Feed Pipe



The feed hopper design for conventional granulators is not suitable for long pipes and section bars. We have designed a material side-feed pipe for convenient feeding of long materials. A great option for the CG-36.

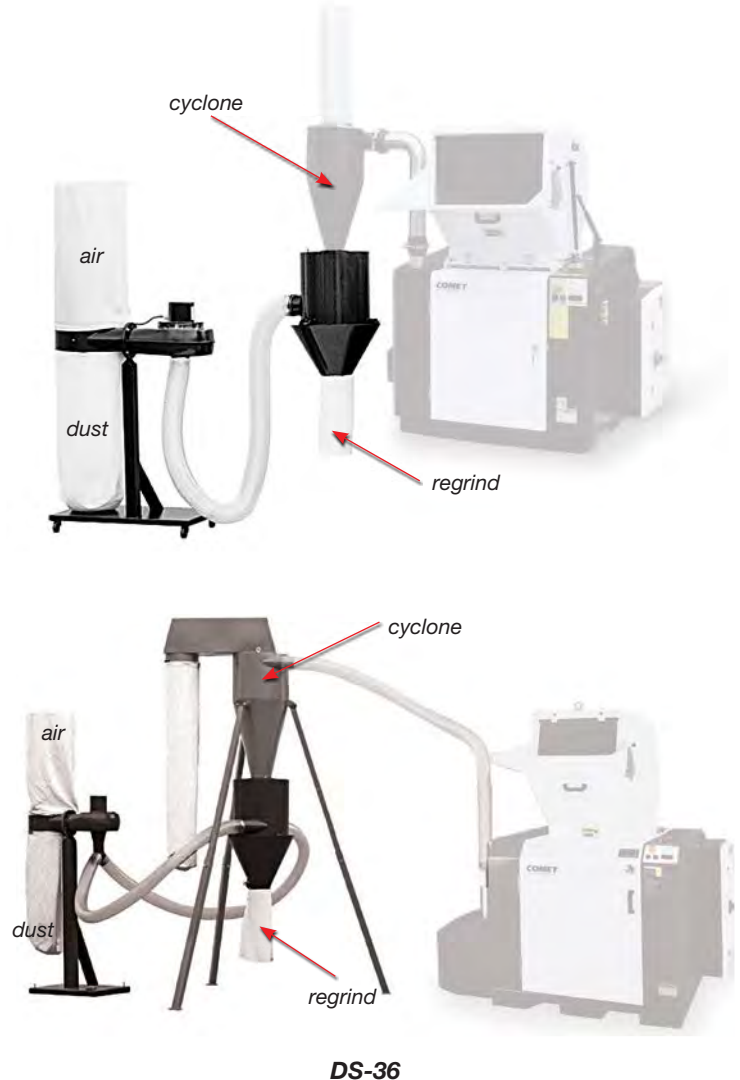
Feed Hopper with Magnet



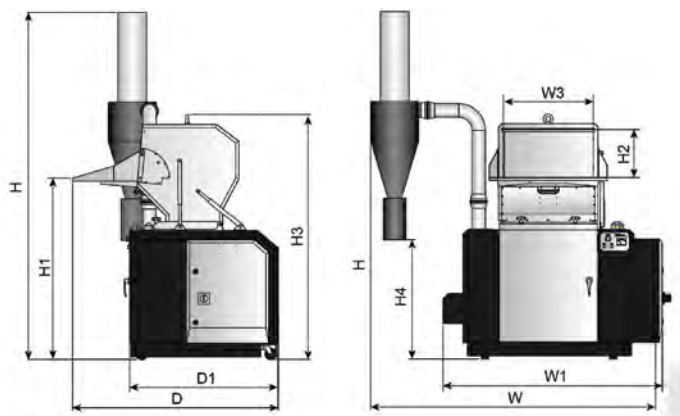
The feed hopper with magnet is used to remove metal scrap and contaminants from the material.

Cyclone Dust Separator

The cyclone dust separator is designed separate the dust from the regrind for recycling and to keep the working environment clean. The filtered dust size can be adjusted via an adjusting valve. This device ensures full use of the regrind to avoid material waste and enhance your bottom line.



CG-23/30/36



- Notes:**
1. SKD11 steel grade
 2. Max. capacity of machine is subject to screen mesh diameter and material composition.
 3. Noise levels vary with different materials and motor types.
 4. To avoid plastic from sticking to blades, all material should be crushed at a normal temperature.
 5. Power supply: 3 ϕ , 230/400/460/575V, 50/60Hz.

CG-23/30 Specifications

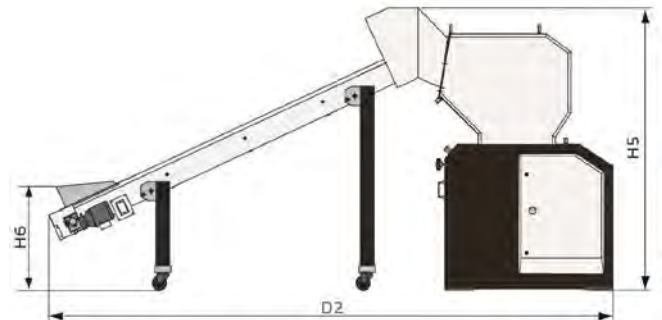
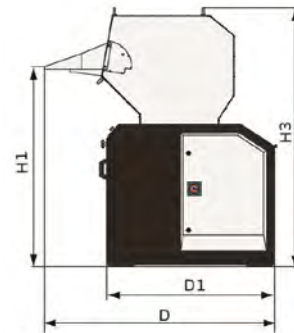
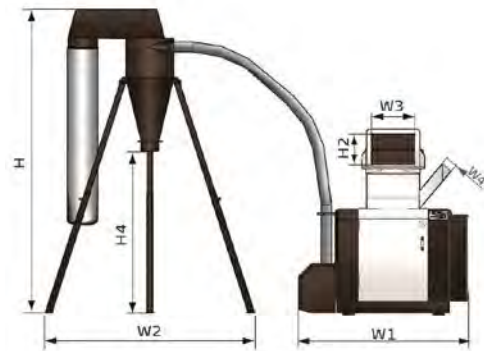
Model	CG-2324	CG-2336	CG-2348	CG-3048	CG-3060
Motor Power (kW, 50/60 Hz)	5.5 / 6.3	7.5 / 8.6	11 / 12.6	11 / 12.6	15 / 17.3
Conveying Blower (kW, 50/60 Hz)	0.55 / 0.66				
Rotor Speed (RPM 50/60 Hz)	415 / 500	415 / 500	415 / 500	415 / 500	415 / 500
Blade Type	Staggered	Staggered	Staggered	Scissor	Scissor
Blade Material	SKD11				
Number of Fixed Blades	2				
Number of Rotating Blades	3 x 2	3 x 3	3 x 4	3	3
Cutting Chamber	(mm)	230 x 240	230 x 360	230 x 480	300 x 480
	(inch)	9 x 9.5	9.0 x 14	9 x 19	12 x 19
Max. Output	(kg/hr)	90	120	150	185
	(lb/hr)	198	265	331	408
Noise Level dB(A)	90 ~ 95				
Screen Hole Dia.	Φ8mm				
Dimensions					
H	(mm)	2210			
	(inch)	87			
H1	(mm)	1180			1220
	(inch)	46			48
H2	(mm)	250			340
	(inch)	10			13
H3	(mm)	1510			1640
	(inch)	59			64.5
H4	(mm)	960			
	(inch)	38			
W	(mm)	1530	1650	1770	1780
	(inch)	60	65	70	70
W1	(mm)	1110	1230	1350	1350
	(inch)	44	48	53	53
W3	(mm)	240	360	480	480
	(inch)	9	14	19	19
D	(mm)	1250			1390
	(inch)	49			55
D1	(mm)	920			1010
	(inch)	36			40
Weight	(kg)	470	520	600	700
	(lb)	1036	1146	1323	1543

We reserve the right to change specifications without prior notice.

CG-36 Specifications

Model	CG-3650	CG-3675
Motor Power (kW, 50/60 Hz)	18.5	30
Conveying Blower (kW, 50/60 Hz)	1.1 / 1.3	1.5 / 1.9
Rotor Speed (RPM 50/60 Hz)	540 / 650	
Blade Material	SKD11	
Number of Fixed Blades	2	4
Number of Rotating Blades	6	
Cutting Chamber (mm)	360 x 500	360 x 750
(inch)	14 x 20	14 x 29.5
Max. Output (kg/hr)	620	800
(lb/hr)	1367	1764
Noise Level dB(A)	100 ~ 105	
Screen Hole Dia.	Φ10mm	
Increased Conveying Blower Power (kW)	◆(1.5)	◆(2.2)
Dimensions		
H (mm)	2710~3155	
(inch)	107~124	
H1 (mm)	1520	
(inch)	60	
H2 (mm)	350	
(inch)	14	
H3 (mm)	1980	
(inch)	78	
H4 (mm)	1240~1690	
(inch)	49~66.5	
H5 (mm)	2100	
(inch)	83	
H6 (mm)	780	
(inch)	31	
W1 (mm)	1930	2180
(inch)	76	86
W2 (mm)	1900~2130	
(inch)	75~91	
W3 (mm)	500	750
(inch)	20	29.5
W4 (mm)	160 x 160	
(inch)	6 x 6	
D (mm)	1720	
(inch)	68	
D1 (mm)	1250	
(inch)	49	
D2 (mm)	4220	
(inch)	166	
Weight (kg)	1480	1730
(lb)	3262	3814

We reserve the right to change specifications without prior notice.



CG-36 with Belt Conveyor

- Notes:**
- ◆ stands for optional
 - SKD11 steel grade
 - Max. capacity of machine is subject to screen mesh diameter and material composition.
 - Noise levels vary with different materials and motor types.
 - To avoid plastic from sticking to blades, all material should be crushed a normal temperature.
 - Power supply: 3φ, 230/400/460/575V, 50/60Hz.